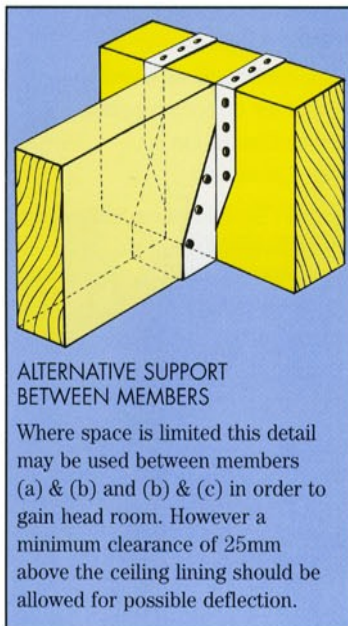
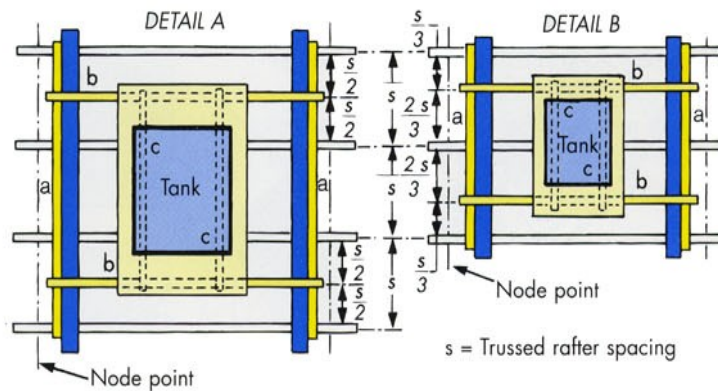
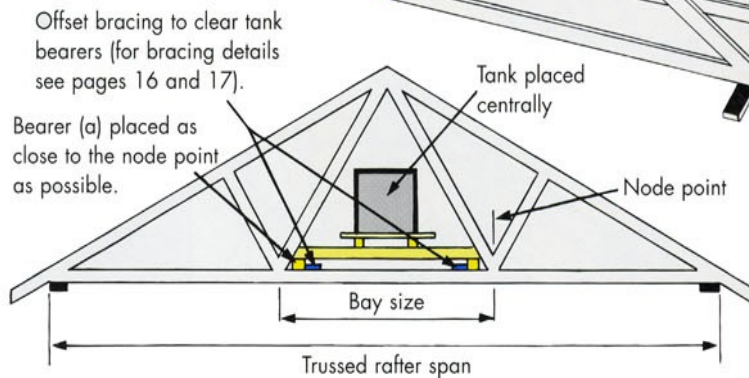
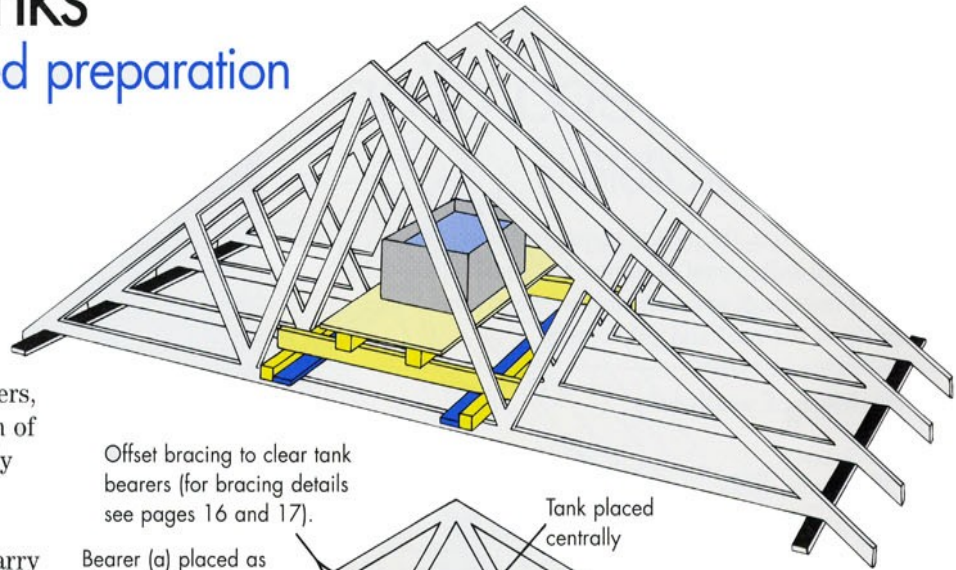


Water tanks

Recommended preparation

Where tanks are to be supported by trussed rafters, the size, type and position of the tanks should be clearly indicated.

The trusses must be specifically designed to carry the extra weight which should be distributed over three or more trusses by the use of spreader beams. The loads should be applied as close as possible to the node points on the ceiling ties. The maximum load imposed by the tank and its contents must not exceed 450N at each adjacent ceiling tie node point. In such cases, the support members should be in accordance with the table below. In other cases where applicable, the support spreader beams should be designed to BS 5268: Part 2.



Total tank capacity to marked waterline	Min. member sizes		Max. trussed rafter span for fink configuration m	Max. bay size for other configurations m
	a and c	b		
	mm			
DETAIL A Not more than 300 L supported on four trussed rafters	47 x 72	2/35 x 97 or 1/47 x 120	6.50	2.20
	47 x 72	2/35 x 120 or 1/47 x 145	9.00	2.80
	47 x 72	2/35 x 145	12.00	3.80
DETAIL B Not more than 230 L supported on three trussed rafters	47 x 72	1/47 x 97	6.50	2.20
	47 x 72	2/35 x 97 or 1/47 x 120	9.00	2.80
	47 x 72	2/35 x 120 or 1/47 x 145	12.00	3.80

NOTE: Support members may be of any species with a permissible bending stress not less than that of European redwood/whitewood of GS or C16 stress grade.